

# And Yet They Deny

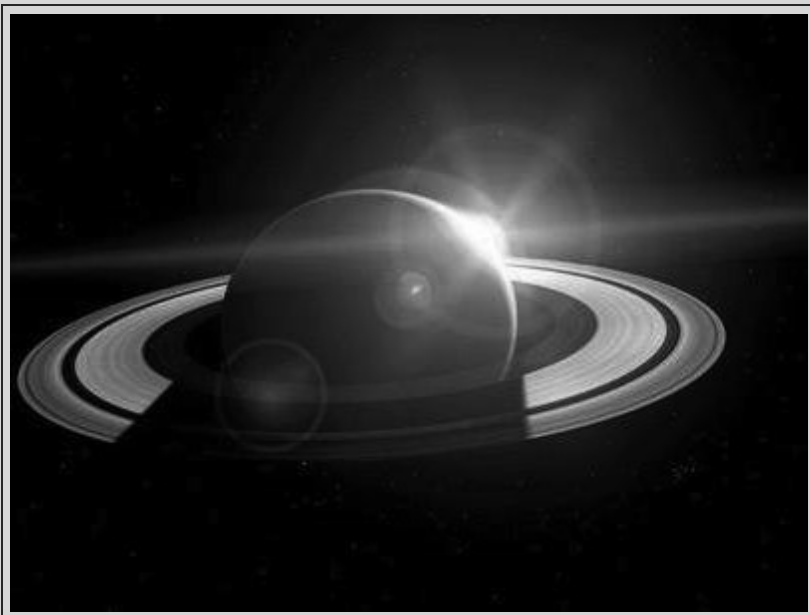
SEARCH THIS BLOG

Search

MONDAY, 25 JANUARY 2010

## Occult Symbolism : Saturn Worship

*You might not know it, but the entire world has been worshipping Saturn for thousands of years. The cult has never stopped and its rites are still present to this day. Saturn, dubbed the "Lord of the Rings", is the reason why we exchange rings at weddings or put halos on the heads of godly people. This article exposes the attributes of the god Saturn and the perpetuation of his cult through in pop culture.*



Since ancient times, sages gazed at the stars, admiring their heavenly glow and attributing them godly powers, based on their effect on humans. Before the Great Flood, Saturn was regarded by all mankind as the supreme god and ruler of the kings. Occult researchers affirm that Saturn ruled the kingdom of Atlantis and became the divine ancestor of all earthly patriarchs and kings. The cult has been perpetuated through numerous gods during Antiquity:

*"Chronos, or Saturn, Dionysos, Hyperion, Atlas, Hercules, were*

THE QUR'AN; ONLINE

Online Qur'an (courtesy of Search Truth)

"THE MESSAGE; THE STORY OF ISLAM" (1976)

Watch the film in full here

UK NATIONAL DEBT COUNTER; HOW MUCH DO YOU "OWE" THE NEW WORLD ORDER?

**Britain's National Debt**  
You owe £25,211

Get Widget DebtBombshell

UK National Debt Clock - DebtBombshell

*all connected with 'a great Saturnian continent;' they were kings that ruled over countries on the western shores of the Mediterranean, Africa and Spain. "*

Baldwin, Prehistoric Nations

In Egyptian mythology Isis is considered Saturn's eldest daughter:

*"I am Isis, Queen of this country. I was instructed by Mercury. No one can destroy the laws which I have established. I am the eldest daughter of Saturn, most ancient of the Gods"*

**SATURN IN SEMITIC CIVILIZATIONS**

Semitic civilizations referred to the god Saturn as "El". The supreme deity was represented by a black cube. We can find instances of the cube across the world.



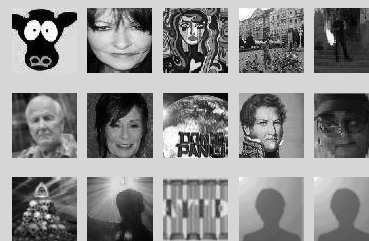
Black Cube in Santa Ana



**Will be part of Apple's 24/7 store in NYC**

**FOLLOWERS**

**Följare (15)**



Följia

*AYTD Public Service Announcement - A Reminder*

**POPULAR AYTD POSTS**

*Who Is Allah [God]?*

*So; What Is In The Seasonal Flu Vaccine?*

*Drink Up! Aspartame: The Oh-So-Sweet "Sugar-Free" Soft-Killer*

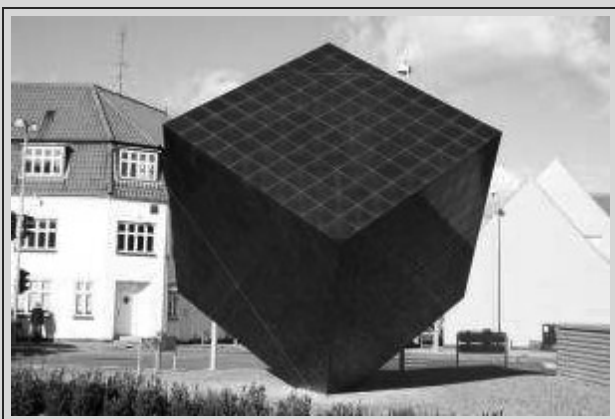
*Forget The Da Vinci Code; The QR Code Reveals All*

**BLOG ARCHIVE**

- ▶ 2016 (5)
- ▶ 2015 (21)
- ▶ 2014 (21)
- ▶ 2013 (43)
- ▶ 2012 (73)
- ▶ 2011 (89)
- ▼ 2010 (156)
  - December 2010 (6)
  - November 2010 (5)
  - October 2010 (11)
  - September 2010 (6)
  - August 2010 (15)
  - July 2010 (13)
  - June 2010 (6)
  - May 2010 (24)
  - April 2010 (15)
  - March 2010 (14)
  - February 2010 (19)



**Manhattan, NYC**



**Denmark**



**Australia**

January 2010 (22)

► 2009 (135)

---

TRUTHSEEKER'S NETWORK

Alan Watts' "Cutting Through The Matrix"

Chris Spivey; The World Put Right  
Drudge Report

Dua To Allah

Gallowayist [George Galloway YouTube Channel]

George Galloway

Gerald Celente's Trend Journal

Grailcode

Greg Palast; Investigative Reporter

HOLLYWOOD REPTOIDZ

In Search Of Black Assassins

Infowars

Islamic Newsroom

Jordan Maxwell Show

Mark Dice (YouTube channel)

Max Keiser

News Line (Workers Revolutionary Party)

Peace TV

Press TV

RT UK

RadicalBoulevard

Sheik Ahmed Deedat & IPCI

Sick, Sad World

StuartJHooper

TRUTHISSCARY

The Artist Taxi Driver

The Deen Show

TheTruthIsFromGod

Theintelhub

True Islam

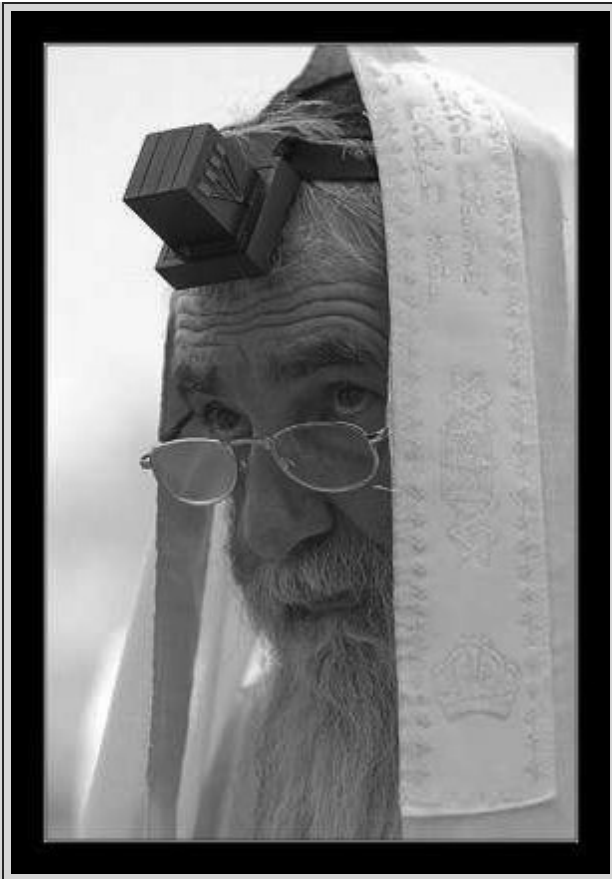
Vigilant Citizen

Wide Shut

---

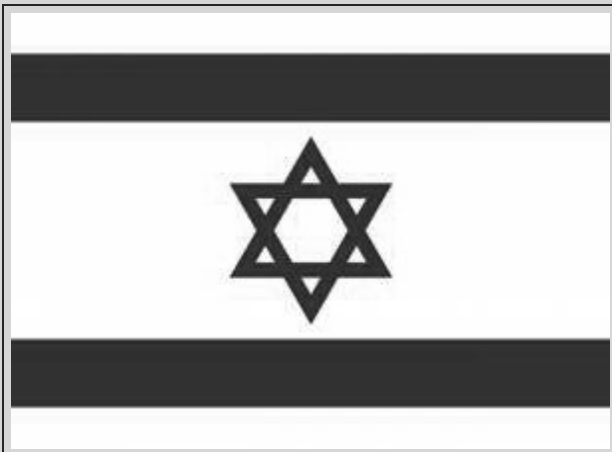
ABOUT ME





**This black cube is a remnant of the ancient worship of El.**

Ancient Hebrews represented Saturn with the six pointed star, which later became the Star of David (it also had many other esoteric meanings). The symbol is still found on Israel's flag.



**Many esoteric researchers affirm that the name Is-Ra-El is the combination of the names of ancient pagan deities Isis, Ra and El.**

#### SATURN IN WESTERN CIVILIZATIONS

The Greeks and the Romans also worshiped Saturn as a cruel deity. Here's a brief summary of the mythology of Saturn in the western world:

*“With the deposing of his father, Saturn became the ruler of the Universe for untold ages and he reigned with his sister, Ops, who*

[SIGN HERE](#)

Contact AndYetTheyDeny; email -  
aytdeny@gmail.com

[VIEW MY COMPLETE PROFILE](#)

*also became his wife. It was prophesied that one day Saturn would lose power when one of his children would depose him. To prevent this from happening, each time Ops delivered a child Saturn would immediately swallow it. When her sixth child, Jupiter (Zeus), was born, Ops had him spirited away to the island of Crete. She then wrapped a stone in his swaddling clothes. Her deception was complete when Saturn swallowed it, thinking it was the child. When Jupiter was grown, he secured the job of cup-bearer to his father. With the help of Gaia, his grandmother, Jupiter fed his father a potion that caused him to vomit up Jupiter's five siblings, Vesta (Hestia), Ceres (Demeter), Juno (Hera), Pluto (Hades), and Neptune (Poseidon)."*

-Wikipedia, Saturn (mythology)



**Saturn devouring one of his children by Peter Paul Rubens**

Saturn always had a negative, if not evil significance. In ancient times, it has been called "The Greater Malefic" which was opposed to Jupiter, "The Greater Benefic". Saturn is esoterically associated with man's limitations, restrictions, death and decay. His Greek name was "Kronos", the ruler of time, time being the main factor inevitably leading to the death of mortals. Traditional representations of the "grim reaper" originate from the attributes of the god Saturn, who held the sickle with which he slain his father.



**“To the initiate, the skeleton of death holding in bony fingers the reaper’s scythe denotes Saturn (Kronos), the father of the gods, carrying the sickle with which he mutilated his own sire.”**

#### SATURN AND SATAN

Saturn has also been associated with Satan and this, for numerous reasons. First, many authors argue that the word Satan is derived from the word Saturn. Second, Saturn is associated with the color black as well as Satan. Third, Ancients considered Saturn to be the farthest planet from the sun, the latter being associated with the principle of Good. (Note that Pluto never was considered a planet). Saturn is consequently the celestial body that is the less exposed to the sun’s divine light and thus associated with the coldness of the principle of Evil. Finally, the “great god Pan”, the horned deity, represented Saturn in ancient paganism. This half-man half-goat creature is considered the ancestor of our modern depictions of Satan.



**“Pan was a composite creature, the upper**

**part—with the exception of his horns—being human, and the lower part in the form of a goat. (...)The pipes of Pan signify the natural harmony of the spheres, and the god himself is a symbol of Saturn because this planet is enthroned in Capricorn, whose emblem is a goat” -Manly P. Hall, Secret Teachings of All Ages**

So Pan was depicted with horns due to the fact it represented Saturn, the ruler of the house of Capricorn which symbol is a goat:



Capricorn - symbol of the Goat rising from the body of a fish

Pan was the controlling spirit of the lower worlds. He was portrayed roaming through the forests, penis erect, drunk and lascivious, frolicking with nymphs and piping his way through the wild. We might say he ruled the lower nature of man, its animal side, not unlike Satan.

Despite acknowledging its association with Evil, secret societies find the veneration of Saturn necessary to obtain illumination. It is the necessary counterpart of the principle of Good. Masonic authors clearly associate Saturn with Satan:

*“Saturn is the opposite to Jupiter; his symbol is the cross above*

*the sign of Luna (♄). He is the Satan, the Tempter, or rather the Tester. His function is to chastise and tame the unruly passions in the primitive man.”*

*-J.S. Ward, Freemasonry and the Ancient Gods*

Probably the most extreme example of a secret society worshiping Saturn's Evil principle is the “Fraternitas Saturni”. This occult organization is based in Germany and openly embodies the hidden side of Saturn worship.

*“The Fraternalitas Saturni (FS), the Brotherhood of Saturn, has become known to English readers through fragmentary descriptions which emphasize the sensational, sex-magical aspects of this lodge's work or else its darker, more Satanic, side. This is understandable in light of the fact that the FS is (or was) the most unabashedly Luciferian organization in the modern Western occult revival, and its practice of sexual occultism perhaps the most elaborately detailed of any such lodge. The FS represents a unique blend of astrological cosmology, neo-Gnostic daemonology, sexual occultism, and Freemasonic organizational principles. This grand synthesis was*

*originally the vision of one man, the long-time Grand Master of the FS, Gregor A. Gregorius.”*

-Stephen E. Flowers, Fire & Ice: The History, Structure, and Rituals of Germany’s Most Influential Modern Magical Order: The Brotherhood of Saturn


TO CONCLUDE

This article presented SOME of the ways humanity represented Saturn through the ages. The great amount of symbols associated with this obscure deity only emphasize its importance in human history. The advent of the monotheistic religions of Christianity, Judaism and Islam confined the worship of Saturn to occult circles. As we saw here, the Lord of the Rings is still omnipresent in popular culture but only recognized by those who have eyes to see and ears to hear.

**THE ASSOCIATED PRESS**

**VATICAN CITY - A papal aide says Pope Benedict intends to distributing communion at mass.**

🔍 ENLARGE PHOTO



THE ASSOCIATED PRESS/ Plinio Lepri

**Pope Benedict XVI, wearing his Saturn Hat, named after the ringed planet Saturn, blesses tourists and faithful while touring St. Peter's square aboard his popemobile during the weekly open-air general audience at the Vatican Wednesday, June 25, 2008.**

**Benedict's master an interview Wedn newspaper L'Osse will place the comm faithful who kneel l**

**That's how Romar Communion in the reforms of the Sec 1960s.**

**The reforms made the host in their ha**

**The aide, Msgr. Gi distributing commu faithful remain dev**

**Benedict gave con during his trip this**

Source: jordanmaxwell.com

POSTED BY SIGN HERE ..... AT 22:59


 +20 Recommend this on Google

REACTIONS:  Like (1)  Dislike (1)

**134 COMMENTS:**

**Anonymous** 26 January 2010 at 08:13

You forgot the Kaba in Mecca on your list of black cubes.

Reply

▼ Replies